

## Konica Minolta Copier/Printer Driver Installation For Windows 7

- 1) Download the latest driver (PCL when available) for your specific operating system from the Konica Minolta website with the links below. The Windows driver is the same for both printer models and will be listed as for the BizHub 554e so it doesn't matter which link you use and it can be used to install all three copiers.

1<sup>st</sup> Floor CSL ([BizHub 364e Driver](#))

<http://onyxweb.mykonicaminolta.com/OneStopProductSupport/SearchResults?products=1668>

2<sup>nd</sup> and 5<sup>th</sup> Floor CSL ([BizHub 454e Driver](#))

<http://onyxweb.mykonicaminolta.com/OneStopProductSupport/SearchResults?products=1666>

1<sup>st</sup> Floor CSL 1001B Copier IP Address: 128.186.184.170

2<sup>nd</sup> Floor CSL 2000A Copier IP Address: 128.186.184.171

5<sup>th</sup> Floor CSL 5001 Copier IP Address: 128.186.184.173

- 2) Extract the driver file that was downloaded and find the installer file for your OS listed below.

Setup64.exe for 64 bit Windows Systems (x64)

Setup.exe for 32 bit Windows Systems (x86)

Accept the Default option "Install printers/MFPs" and continue by clicking "Next". Now follow the instructions for either a or b depending on how you are connected to the internet.

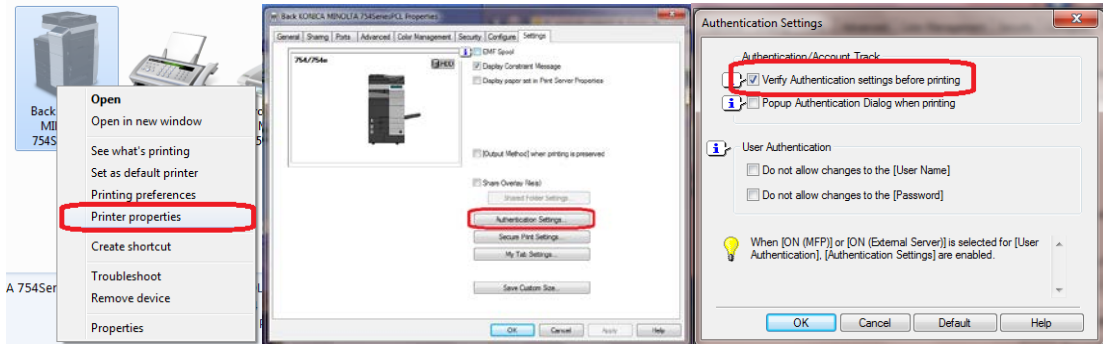
- a) If you are connected to the wired network in the CSL building then the driver installer should be able to auto detect the IP addresses of the Copier(s). When this is done, it should list the copiers that are found and compatible with the driver installer (it will have them checked by default) just click on "Next" to proceed.
- b) If you are connected to the wireless network in the CSL building or if it doesn't auto detect the copier(s) then you will have to manually specify the IP address of the copiers as you add them. To do this, choose "Specify the Printer/MFP Except for the Above. (IP Address, Host Name...)" and click on "Refer to...". Now choose "Ipv4,Ipv6 Address/IP Host Name", enter the IP address of the copier that you want to add (as listed above) and then click "OK". Note: If it asks "Cannot find the specified Printer/MFP. Do you want to continue installing?" choose "OK".

It should now show you a list of the drivers that are available and the default should be used so just click on "Next" and then "Install". After it has finished installing the driver but before you click on "Finish", you can rename the printer to give it a name that is descriptive of its location by clicking on the printer and then "Rename Printer". Clicking on "Finish" should add the printer to your printer list/folder but you will still need to configure authentication settings if this is for the Administrative Office Copier (see next page for authentication settings).

(see next page for authentication settings)

# Konica Minolta Copier/Printer Authentication Settings For Windows 7

- 1) Go to “Devices and Printers” in Windows 7 and right click on your Konica Minolta Printer (whatever you named it) and choose “Printer properties”. Now go to the “Settings” tab and click on the button for “Authentication Settings”. Check the box for “Verify Authentication settings before printing” and click “OK” and then “OK” again when on the “Settings” tab again.



- 2) While still at “Devices and Printers” in Windows 7, right click on you Konica Minolta Printer again and choose “Printing Preferences” this time. No go to the “Basic” tab and click on the button for “Authentication/Account Track”. You should now be able to fill in the fields “Department Name” with your name and “Password” with the one that has been assigned to you by the Chemistry personnel.

